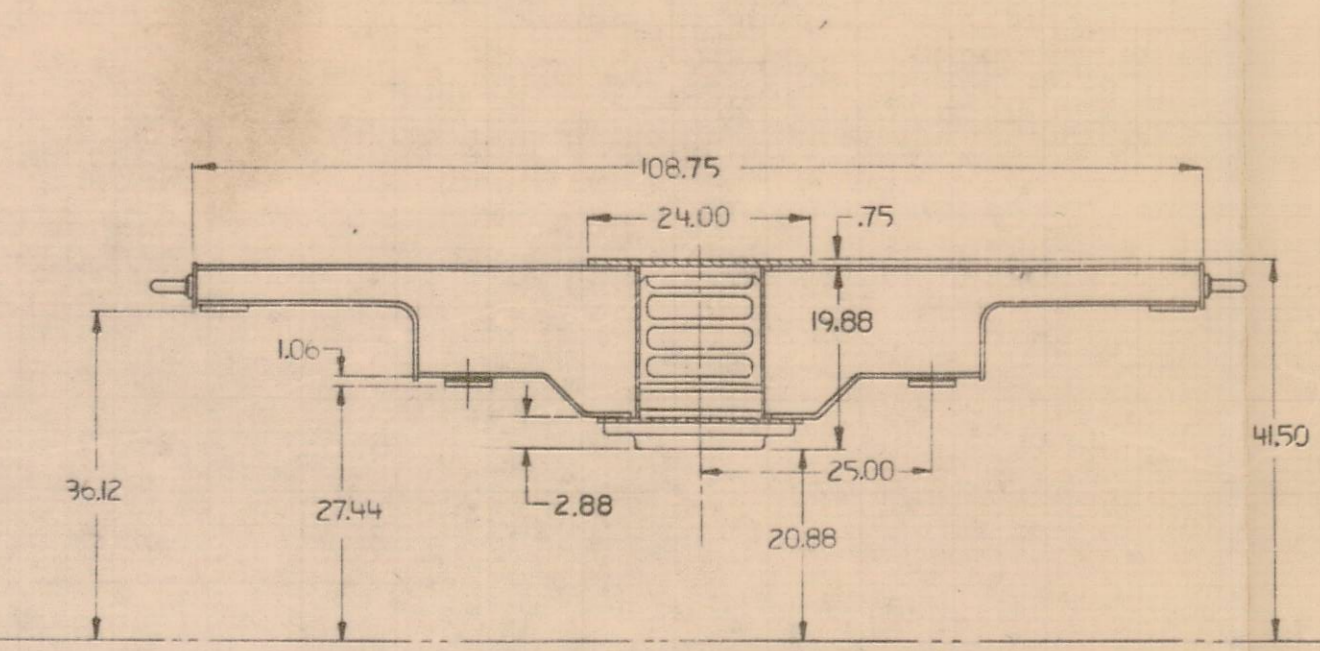
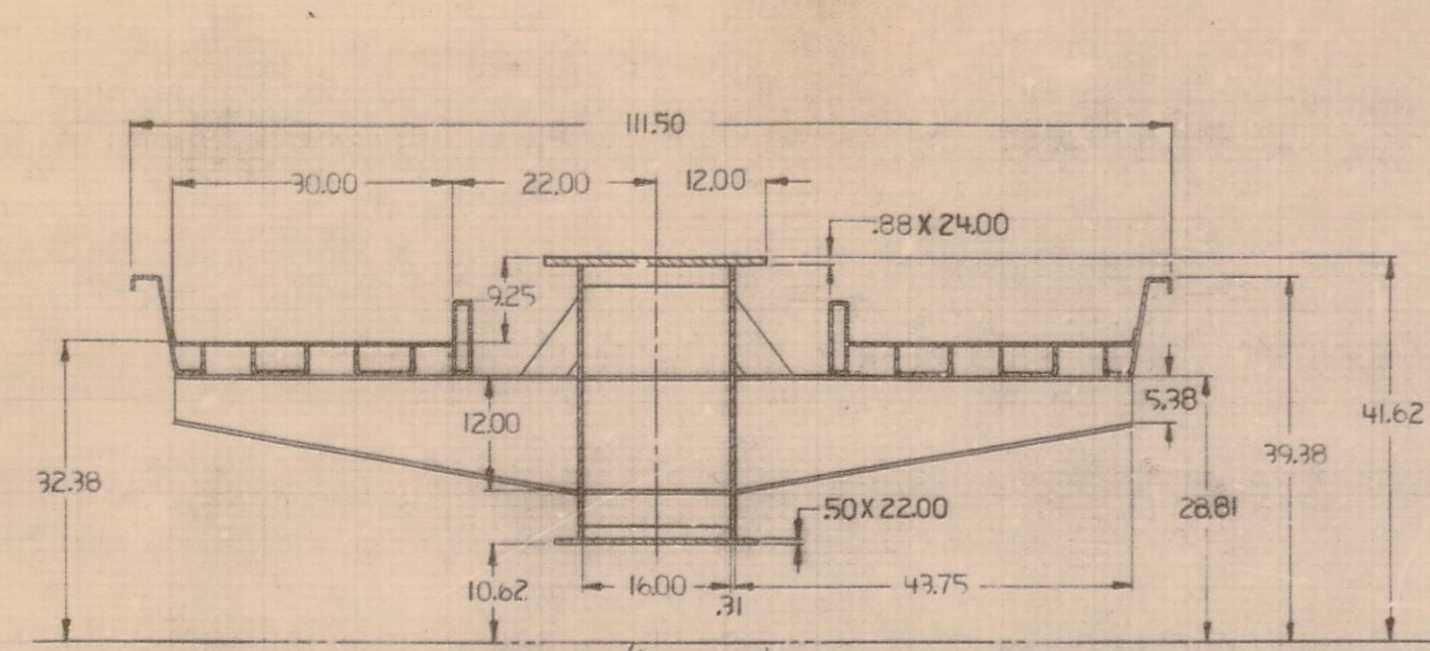


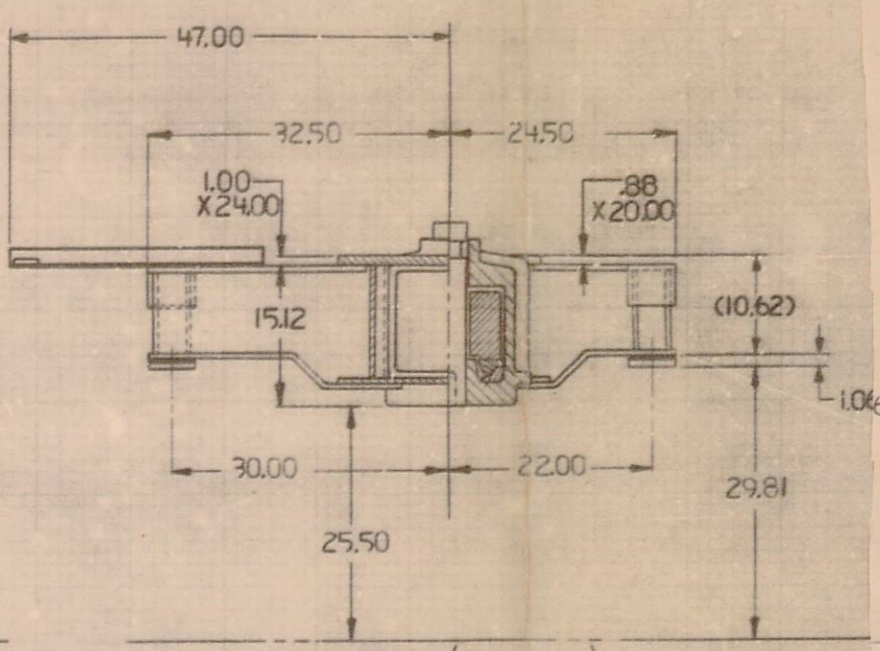
IF APPLICABLE
D. SEE CLASS E-7028 (LOW)
1. ALL AUTOMATIC WELDS
IN E-7027 OR E-7012



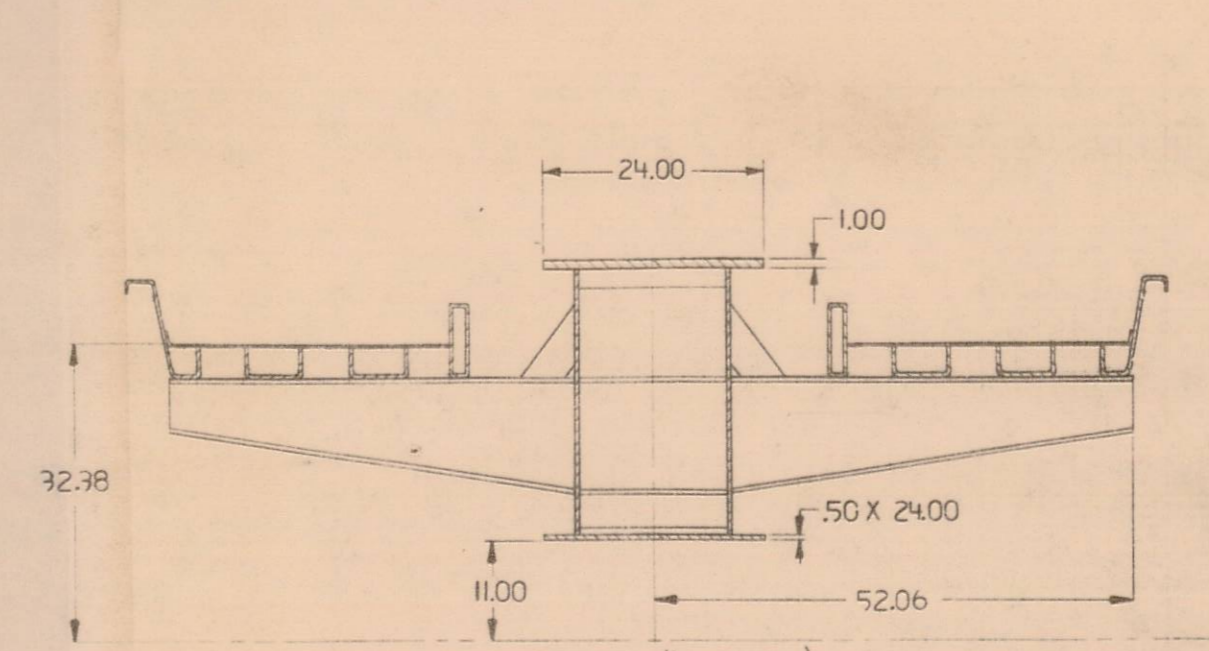
SECT. A-A (1/10 SCALE)
END UNIT



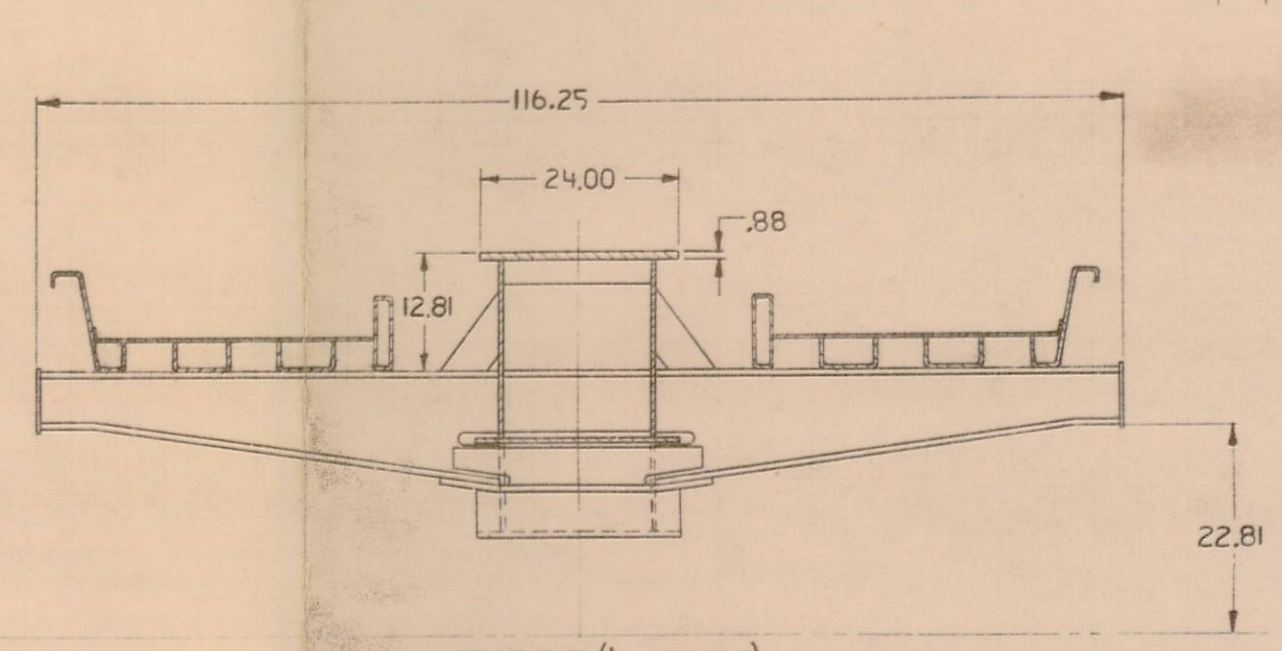
SECT. B-B (1/10 SCALE)
END UNIT



SECT. C-C (1/10 SCALE)
CENTER UNIT

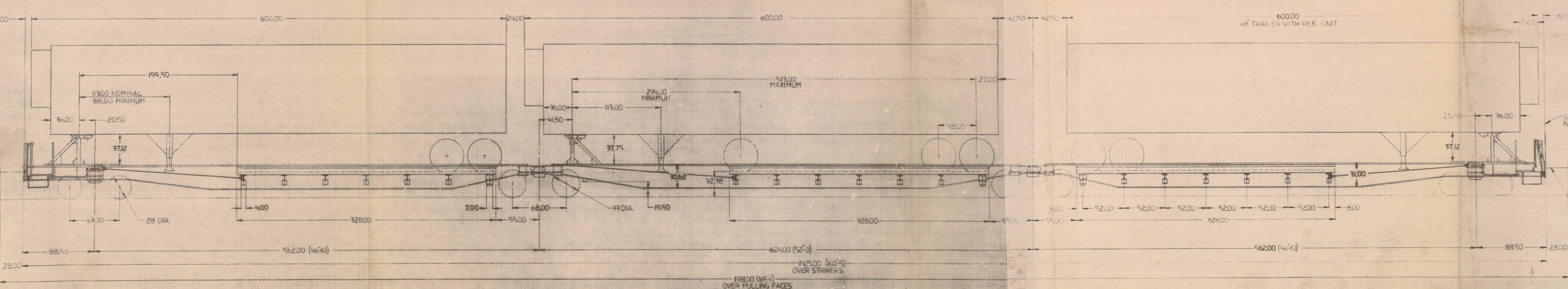
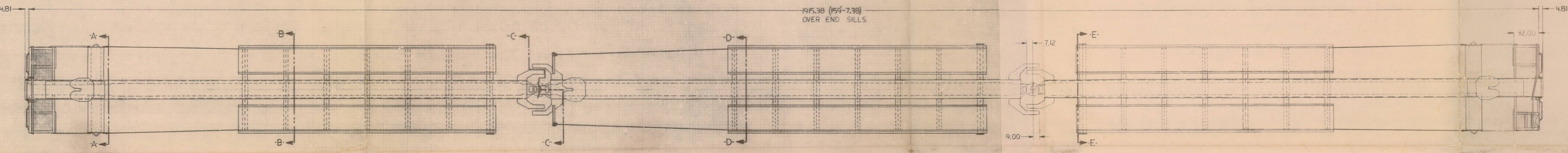


SECT. D-D (1/10 SCALE)
CENTER UNIT



SECT. E-E (1/10 SCALE)
END UNIT

NOTES:
1) ALL UNITS ARRANGED TO ACCOMMODATE 28 FOOT TO 48 FOOT LONG TRAILERS WITH NOSE MOUNTED REFRIGERATION AND WITH EITHER 3/4 INCH OR 1 INCH KINGPIN SETTINGS. ALL UNITS WILL ALSO CARRY 27 FOOT TRAILERS WITH 16 INCH KINGPIN SETTINGS.
2) MAXIMUM HEIGHT REFLECTS .25" SPRING DEFLECTION DUE TO WEIGHT OF EMPTY TRAILER.



A END UNIT

C UNIT

B END UNIT

THIS DRAWING AND THE INFORMATION CONTAINED THEREON IS PROPRIETARY TO PACIFIC CAR AND FOUNDRY COMPANY AND SHALL NOT BE REPRODUCED, COPIED, OR INFRINGED IN WHOLE OR IN PART, OR USED FOR REPRODUCTION OR FOR ANY OTHER PURPOSE WITHOUT THE WRITTEN PERMISSION OF PACIFIC CAR AND FOUNDRY COMPANY.

Table with columns for drawing number, revision, and date. Drawing number: 56 SEEX 20000-20055 3452. Date: 1/20/51.

PACIFIC CAR AND FOUNDRY COMPANY
RAILROAD ENGINEERING
GENERAL ARRANGEMENTS
THREE UNIT INTERMODAL CAR
3452-K-1