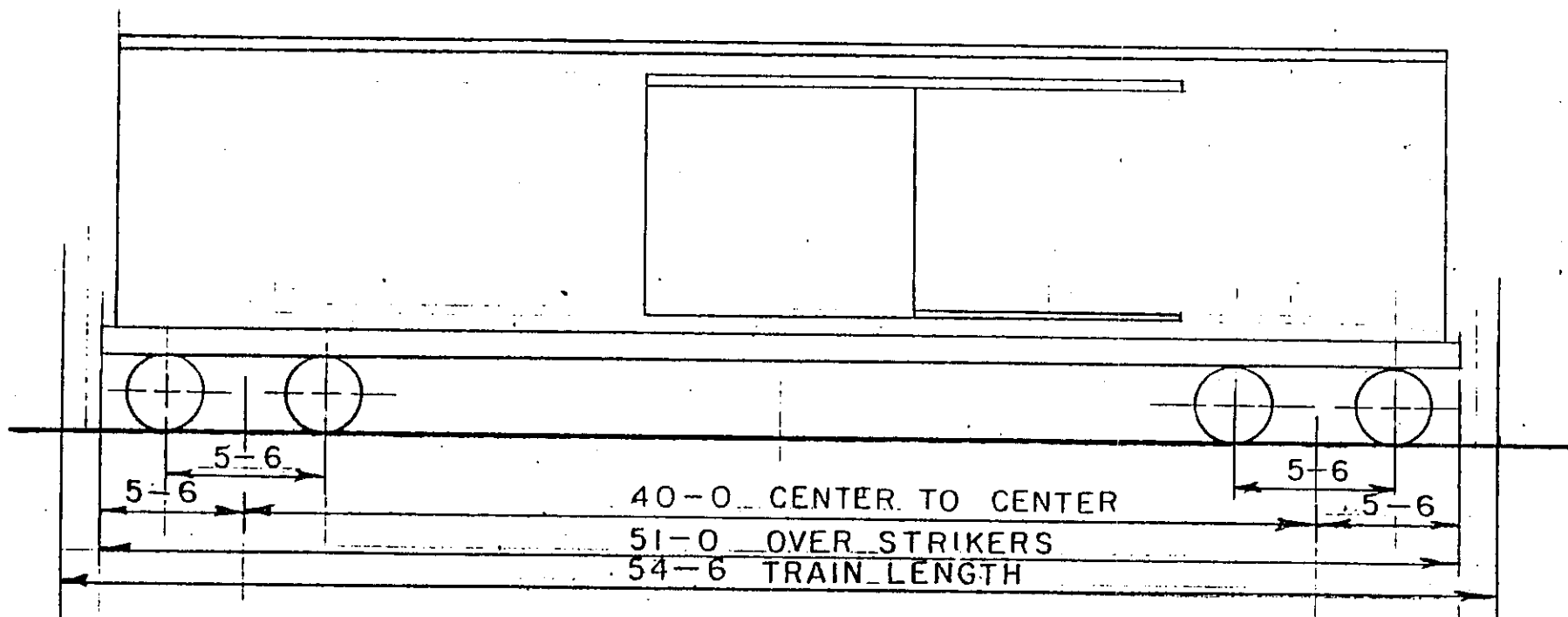


10775-10780 BOX CARS



BUILT BY PRESSED STEEL, THRALL, PULLMAN STD.

DATES BUILT 1943 THUR 1957

REBUILT

PLACED IN SERVICE 1980

WHEELS 33"

TRUCKS

BEARINGS

AXLES 5 1/2 x 10

COULPERS

YOKES

AIR BRAKES AB 10 x 12

HANDBRAKES

LIGHTWEIGHT 65,500

CAPACITY 4780 CU FT

DIMENSIONS

MAX. WIDTH 10-10

MAX HEIGHT 14-10

DOOR OPENING 10-0 x 9-2

INSIDE WIDTH 9-2

INSIDE HEIGHT 10-6

INSIDE LENGTH 50-6

CK'D 2-83 RCK

ALASKA RR