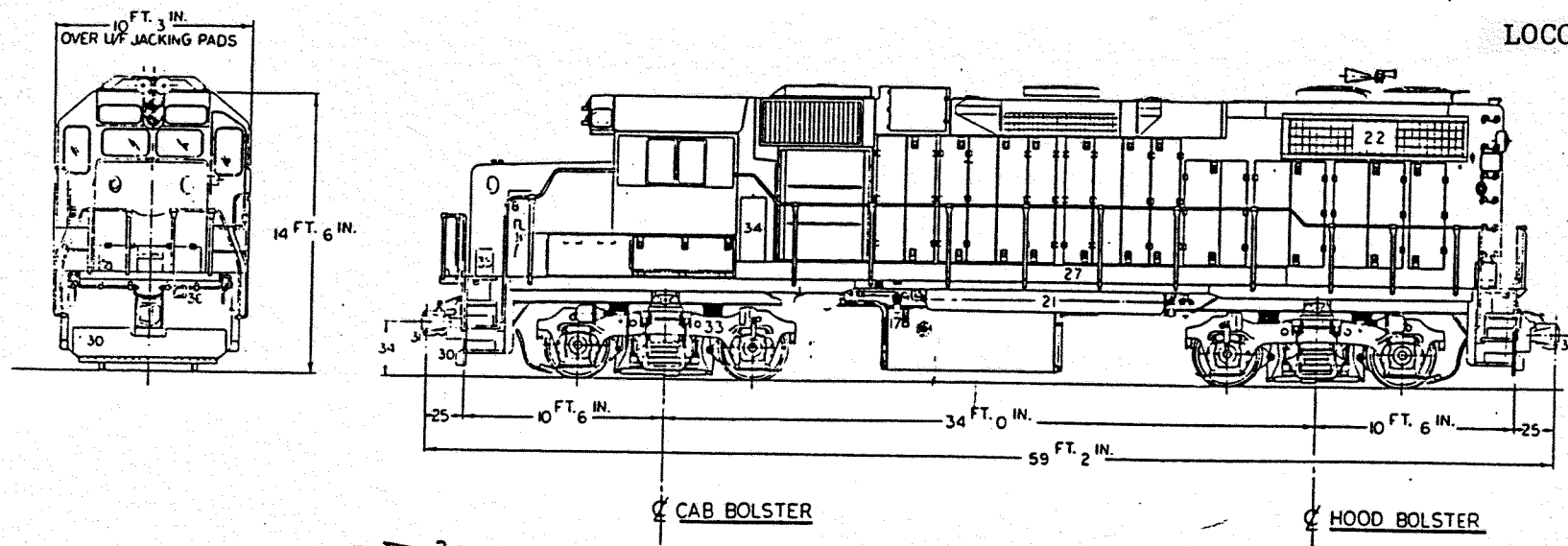


LOCO Nos 2001 & 02



GP 38-2

BUILT BY	GM (EMD)	GEAR RATIO	62:15
DATE BUILT	1977	SUPPLIES - TOTAL CAPACITY	
IN SERVICE	1986	LUBRICATING OIL	243 GAL
PURCHASED FROM	BA&P RR	FUEL OIL	1700 GAL
WHEEL DIAMETER	40	COOLING WATER	240 GAL
JOURNALS	HYATT 6½ X 12	SAND	56 CU. FT.
ENGINE	16-645 E	MAX TRACTIVE EFFORT (½ VBL SUPPLIES @ 25% ADHESION)	61,400 LBS
MAX. GOVERNED SPEED		MAX SAFE SPEED	70 MPH
MAX. GOVERNED SPEED	900 RPM	MIN CONTINUOUS SPEED	10.5 MPH
MAX. IDLE	LOW: 255 / HIGH: 300 RPM	MAX CURVATURE	19 (DEGREES)
CYLINDERS	16	MAX OVERALL DIMENSIONS	
BORE	9.06	HEIGHT	15' 4½"
STROKE	10"	WIDTH	10' 3"
WT. IN WORKING ORDER (all supplies)	245,600#	TRAIN LENGTH	59' 2"
WT. ON DRIVERS	100%	HORSEPOWER	2000
AIRBRAKE SCHEDULE	26L	MODEL	GP38-2
BRAKE CYLINDERS	9"X8"	DYNAMIC BRAKE	STANDARD RANGE
AIR COMPRESSOR/MODEL	GARDNER-DENVER/WBO		

ALASKA RAILROAD

