

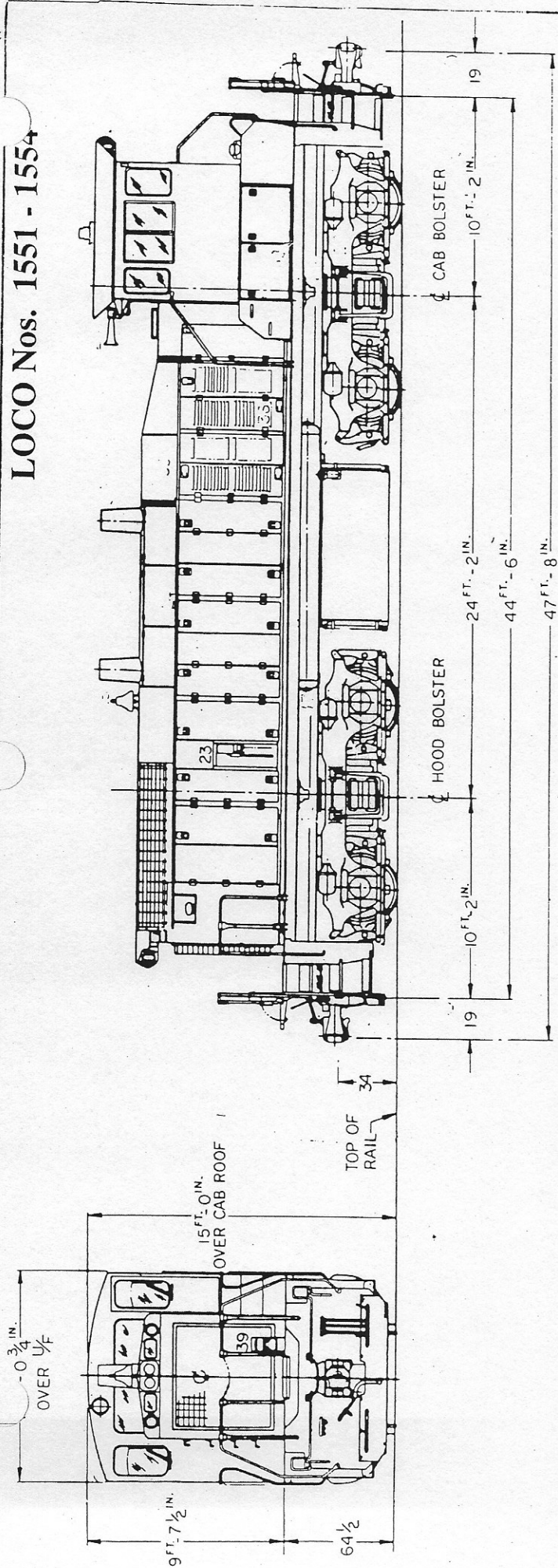
MECHANICAL DEPARTMENT
LOCOMOTIVE DATA
14-Feb-98 REVISED

LOCOMOTIVE	TYPE	LOCOMOTIVE TYPE	YEAR BUILT	YEAR REBUILT	HORSEPOWER	COLOR	
1503	ENG	F7-B	1952	1988	1500	BLUE & YELLOW	8
1551	ENG	MP-15-DC	1976		1500	BLUE & YELLOW	20
1552	ENG	MP-15-DC	1977		1500	BLUE & YELLOW	19
1553	ENG	MP-15-DC	1976		1500	BLUE & YELLOW	20
1554	ENG	MP-15-DC	1980		1500	BLUE & YELLOW	16
1801	ENG	GP-7m	1951	1976	1800	BLACK & YELLOW	
1802	ENG	GP-7m	1951	1976	1800	BLUE & YELLOW	
1803	ENG	GP-7m	1951	1976	1800	BLACK & YELLOW	
1806	ENG	GP-7m	1951	1976	1800	BLUE & YELLOW	
1808	ENG	GP-7m	1951	1976	1800	BLUE & YELLOW	
1809	ENG	GP-7m	1951	1976	1800	BLACK & YELLOW	
2001	ENG	GP-38-2	1978		2000	BLUE & YELLOW	18
2002	ENG	GP-38-2	1978		2000	BLUE & YELLOW	18
2003	ENG	GP-38-2	1978	1986	2000	BLUE & YELLOW	10
2004	ENG	GP-38-2	1978	1986	2000	BLUE & YELLOW	10
2005	ENG	GP-38-2	1978	1986	2000	BLUE & YELLOW	10
2006	ENG	GP-38-2	1978	1986	2000	BLUE & YELLOW	10
2007	ENG	GP-38-2	1978	1987	2000	BLUE & YELLOW	9
2008	ENG	GP-38-2	1978	1987	2000	BLUE & YELLOW	9
2501	ENG	GP-35	1964	1975	2500	BLACK	21
2502	ENG	GP-35	1964	1977	2500	BLACK	19
2504	ENG	GP-30	1963	1980	2500	BLACK	16
2801	ENG	GP-49	1983		2800	BLUE & YELLOW	13
2802	ENG	GP-49	1983		2800	BLUE & YELLOW	13
2803	ENG	GP-49	1983		2800	BLUE & YELLOW	13
2804	ENG	GP-49	1983		2800	BLUE & YELLOW	13
2805	ENG	GP-49	1985		2800	BLUE & YELLOW	11
2806	ENG	GP-49	1985		2800	BLUE & YELLOW	11
2807	ENG	GP-49	1985		2800	BLUE & YELLOW	11
2808	ENG	GP-49	1985		2800	BLUE & YELLOW	11
2809	ENG	GP-49	1985		2800	BLUE & YELLOW	11
3001	ENG	GP-40-2	1975	1981	3000	BLACK	15
3002	ENG	GP-40-2	1975	1985	3000	BLACK	11
3003	ENG	GP-40-2	1975	1986	3000	BLACK	10
3004	ENG	GP-40-2	1975	1984	3000	BLACK	12
3005	ENG	GP-40-2	1975	1986	3000	BLACK	10
3006	ENG	GP-40-2	1975	1982	3000	BLACK	14
3007	ENG	GP-40-2	1976	1983	3000	BLACK	13
3008	ENG	GP-40-2	1976	1995	3000	BLACK & YELLOW	1
3009	ENG	GP-40-2	1976	1988	3000	BLUE & YELLOW HEP	8
3010	ENG	GP-40-2	1976	1983	3000	BLUE & YELLOW HEP	13
3011	ENG	GP-40-2	1976	1989	3000	BLACK HEP	7
3012	ENG	GP-40-2	1978	1983	3000	BLUE & YELLOW	13
3013	ENG	GP-40-2	1978	1983	3000	BLUE & YELLOW	13
3014	ENG	GP-40-2	1978	1984	3000	BLUE & YELLOW	12
3015	ENG	GP-40-2	1978	1978	3000	BLUE & YELLOW	18
3016	ENG	GP-40-2	1967	1985	3000	BLUE & YELLOW	11
3017	ENG	GP-40	1967	1987	3000	BLUE & YELLOW	9
3019	ENG	GP-40	1967	1982	3000	BLUE & YELLOW	14
3020	ENG	GP-40	1967	1981	3000	BLUE & YELLOW	15
3021	ENG	GP-40-2 (SHORT)	1964	1982	3000	BLUE & YELLOW	14

TOTAL 51

AVERAGE LOCOMOTIVE (NEW OR REBUILT) 11.24 YEARS

LOCO Nos. 1551 - 1554

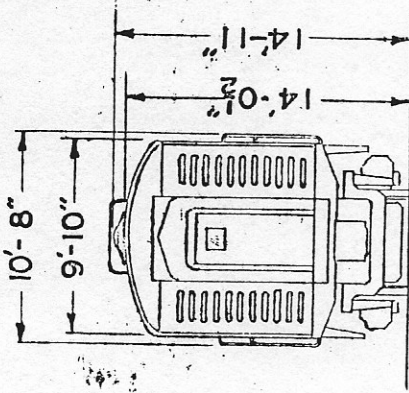


BUILT BY:	GM (EMD)	GEAR RATIO	62:15
DATE BUILT:	8/76, 10/77, 12/76, 10/80	SUPPLIES	
IN SERVICE:	5/6/92, 1993	LUBE OIL (GAL.):	165
PURCHASED FROM:	Lake Erie, Franklin & Clarion Kelly's Creek & Northwestern	FUEL OIL (GAL.):	1100
WHEEL DIAMETER:	40"	COOLING WATER (GAL.):	230
JOURNALS	HYATT 6 1/2 X 12	SAND:	
ENGINE	12-645E	MAX. TRACTIVE EFFORT	60,750
MAX. GOVERNED SPEED	900 RPM	(1/2 vbl supplies, 25% adh):	
IDLE SPEED:		MAX. SAFE SPEED (MPH):	52
CYLINDERS:	BORE: 9 1/16" STROKE: 10"	MIN. CONTINUOUS SPEED (MPH):	
WT. IN WORKING ORDER		MAX. CURVATURE (DEGREES):	
(half vbl. supplies):	243,000#	MAX. OVERALL DIMENSIONS	
WT. ON DRIVERS	100%	HEIGHT:	16' 0"
AIRBRAKE SCHEDULE:	26L	WIDTH:	10' 0 3/4"
BRAKE CYLINDERS:		TRAIN LENGTH:	47' 8"
AIR COMPRESSOR		HORSEPOWER:	1500
		MODEL:	MP 15
		DYNAMIC BRAKES:	Not Equipped

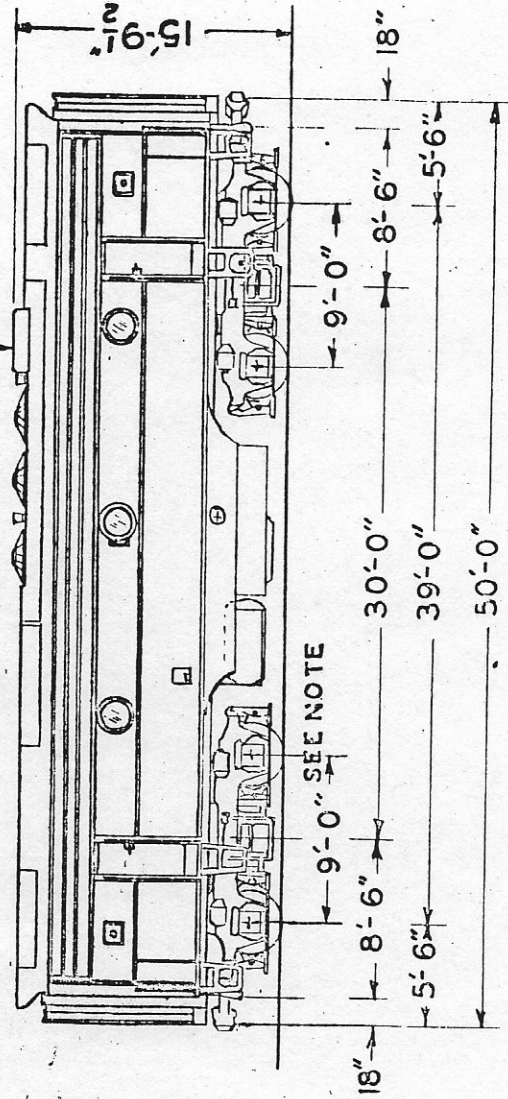
A-2-1596
Loren



ALASKA RAILROAD



WINTER HATCH



SEE NOTE

BUILT BY
DATE BUILT

PLACED IN SERVICE
PURCHASED FROM
WHEEL DIA.
JOURNALS
MAX. GOVERNED SPEED
IDLING SPEED
CYLINDERS
BORE
STROKE
WT. IN WORKING ORDER
WT. ON DRIVERS
AIR BRAKE SCHEDULE
BRAKE CYLINDERS
AIR COMPRESSOR

GENERAL MOTORS CORP. E.M.D.
LOCOS. 1503, DEC. 1952

JAN. 1953
G.M.C. - E.M.D.
40 INCHES.
HYATT 6 1/2 x 12
800 R.P.M.
275 R.P.M.
16
8 1/2
10
244,500 LBS. W/ALL SUPPLIES
244,500 LBS.
6 BL/C
9x8
GARDNER-DENVER
LOCOS. 1503, WXE-8035

OVERNITE HEATER
SPARK ARRESTOR

VAPOR-CLARKSON -4915
AIR-MAZE DIVN, ROCKWELL STD.

GEAR RATIO
SUPPLIES TOTAL CAPY.
LUBE OIL

62:15

200 GALS.

ENGINE COOLING WATER
SAND
MAX. SAFE SPEED
MAX. OVERALL DIMENSIONS
HEIGHT
WIDTH OVER HANDHOLDS
TRAIN LENGTH
WHEEL BASE-TRUCK
MAX. CURVATURE DEGREE

235 GALS.
16 CU. FT.
65 M.P.H.

15'-9 1/2"

10'-8"

50'-0"

9'-0"

23°

FUEL 1500 GALS

VARIABLE SUPPLIES

59670 LBS.

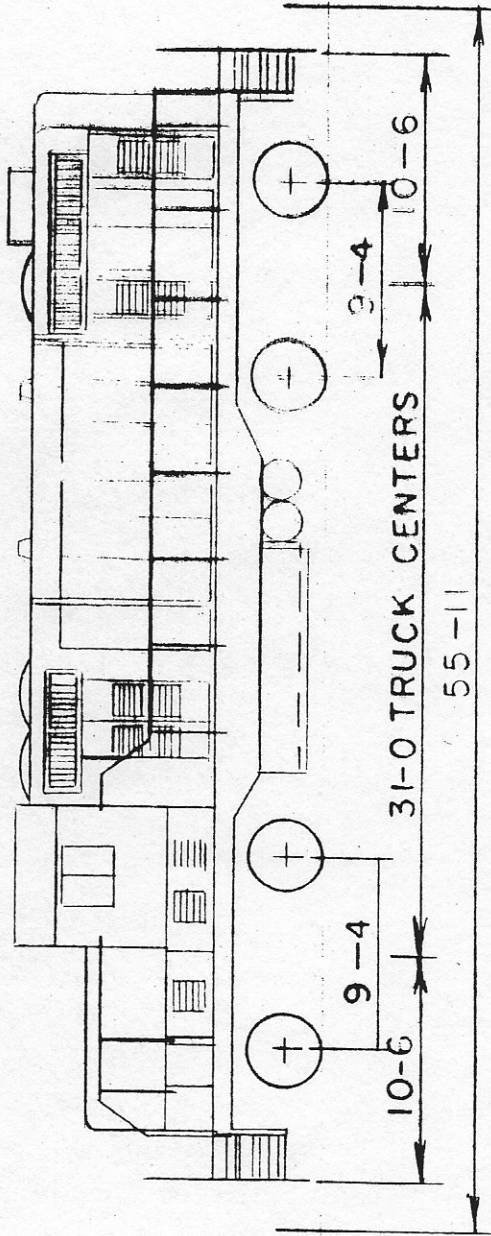
63

45 LBS.

MODEL F7-B BOOSTER UNIT -1500 H.P.
EQUIPPED W/DYNAMIC BRAKES

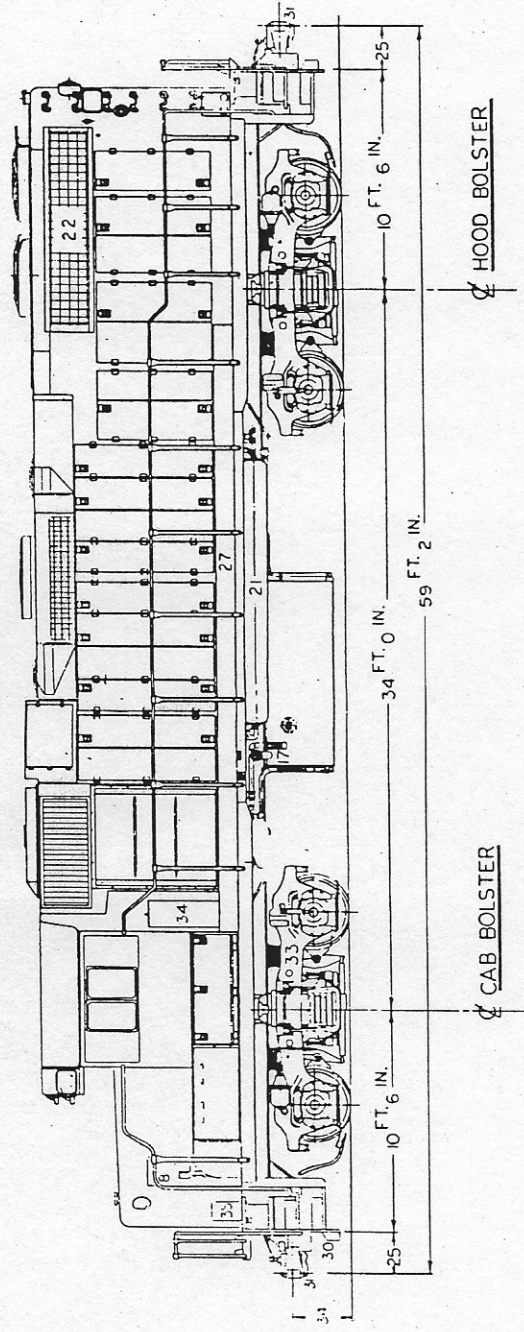
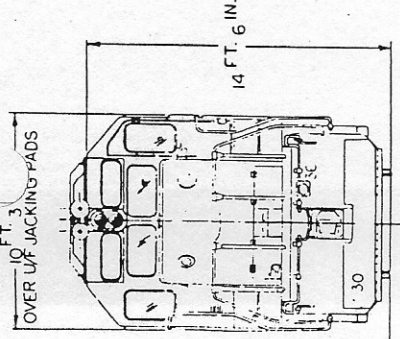
1957

LOCOS 1801-1810



BUILT BY	EMD		65 MPH
DATES BUILT	1951		15-10
PLACED IN SERVICE	1960		10'-3"
WHEELS	40"		21°
JOURNALS	7" x 14" TIMKEN		
MAX. RPM	800		
IDLING SPEED RPM	275		
CYLINDERS	16		
BORE	8 1/2"		
STROKE	10"		
WT. ON DRIVERS	260,200		
AIRBRAKES	6 BL		
BRAKE CYLINDERS	UAH 6" x 11"		
AIR COMPRESSOR	WXO 8012		
TRUCKS	ALCO		
GEAR RATIO	62:15		
LUBE OIL	200 GAL		
FUEL	1700 GAL		
SAND	18 CU FT		
COOL WATER	235 GAL		
		REBUILT	
		1810 MKC	1975
		1801 1809 ICG	1976

ALASKA RR

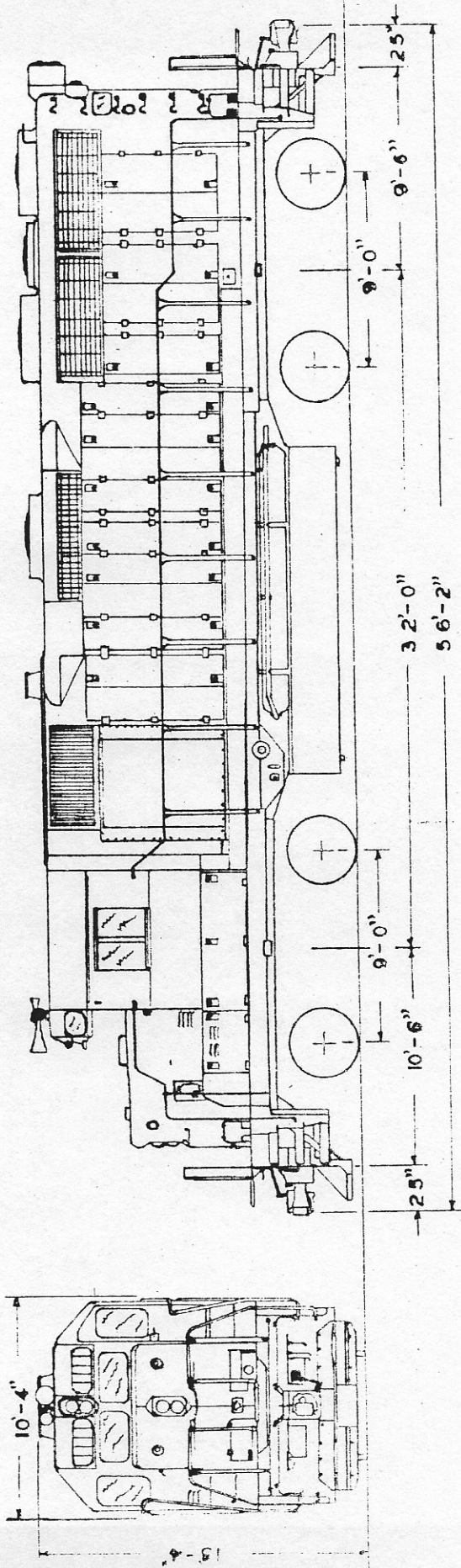


BUILT BY	GM (END)	62:15
DATE BUILT	1969 (2008 1968)	
IN SERVICE	1986	
PURCHASED FROM	HELMS (CR)	243 GAL
WHEEL DIAMETER	40	1700 GAL
JOURNALS	HYATT 6½ X 12	240 GAL
ENGINE	16-645 E	56 CU. FT.
MAX. GOVERNED SPEED	900 RPM	61,400 LBS
MAX. IDLE	LOW: 255 / HIGH: 300 RPM	70 MPH
CYLINDERS	16	10.5 MPH
BORE	9.06	19 (DEGREES)
STROKE	10"	
WT. IN WORKING ORDER (all supplies)	254,300#	
WT. ON DRIVERS	100%	
AIRBRAKE SCHEDULE	26L	
BRAKE CYLINDERS	9"X8"	
AIR COMPRESSOR/MODEL	GARDNER-DENVER/WBO	
SUPPLIES - TOTAL CAPACITY		
LUBRICATING OIL		
FUEL OIL		
COOLING WATER		
SAND		
MAX TRACTIVE EFFORT (½ VBL SUPPLIES @ 25% ADHESION)		
MAX SAFE SPEED		
MIN CONTINUOUS SPEED		
MAX CURVATURE		
MAX OVERALL DIMENSIONS		
HEIGHT		15' 4½"
WIDTH		10' 3"
TRAIN LENGTH		59' 2"
HORSEPOWER		2000
MODEL		GP38-2
DYNAMIC BRAKE		STANDARD RANGE



ALASKA RAILROAD

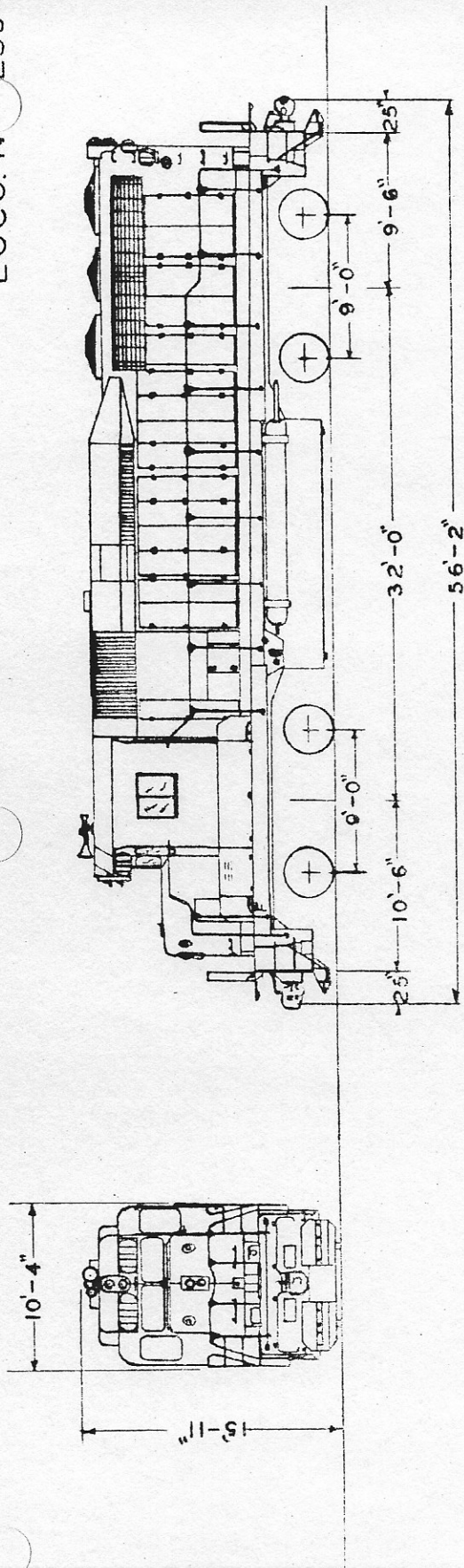
LOCO. I 2501
2502



BUILT BY GENERAL MOTORS CORP. E.M.D.
 DATE BUILT 1964
 PLACED IN SERVICE - 2501-1964 / 2502-2503 - 1965
 PURCHASED FROM G.M.C.-E.M.D.
 WHEEL DIA. 40"
 JOURNALS HYATT - 6 1/2" X 12"
 ENGINE 567 D3A
 MAX GOVERNED SPEED 900 R.P.M.
 MAX IDLING SPEED 315 R.P.M.
 CYLINDERS 16
 BORE 8 1/2"
 STROKE 10"
 WT. IN WORKING ORDER W/ALL SUPPLIES 259,120 LBS.
 WT. ON DRIVERS 259,120 LBS.
 AIRBRAKE SCHEDULE 26 L.
 BRAKE CYLINDERS 9 X 8"
 AIR COMPRESSOR GARDNER - DENVER
 MODEL WBO

GEAR RATIO: 62:15
 SUPPLIES TOTAL CAPY. 243 GAL.
 LUBRICATING OIL 2,600 GAL.
 FUEL OIL 275 GAL.
 ENG. COOLING WATER 41 CU. FT.
 SAND
 MAX. TRACTIVE EFFORT W/VARIABLE SUPPLIES
 AT 25% ADHESION 71 M.P.H.
 MAX. SAFE SPEED 21°
 MAX. CURVATURE DEGREE
 MAX. OVERALL DIMENSIONS:
 HEIGHT 15'-3"
 WIDTH 10'-4"
 TRAIN LENGTH 56'-2"
 2500 H.P. MODEL GP 35 ROAD LOCOMOTIVE
 EQUIPPED W/DYNAMIC BRAKES

CK'D 3-83 RCK ALASKA RR

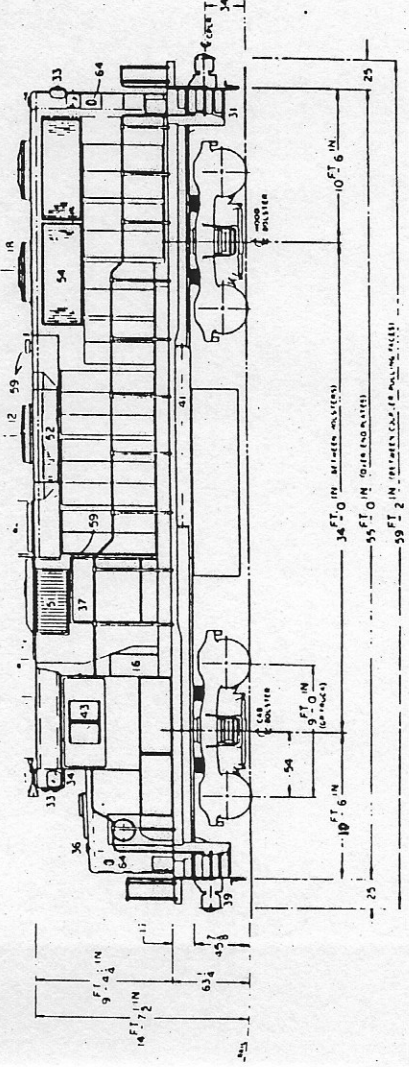
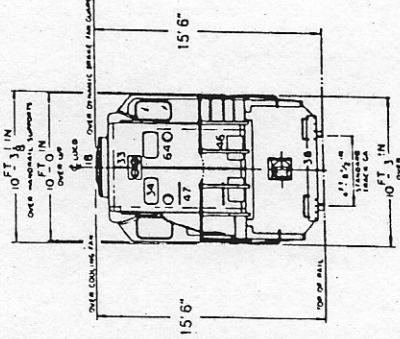


GEAR RATIO 62:15
 SUPPLIES, TOTAL CAPY. 243 GALS.
 LUBRICATING OIL 2,600 GALS.
 FUEL OIL 251 GALS.
 ENG. COOLING WATER 18 CU. FT.
 SAND 71 M.P.H.
 MAX. SAFE SPEED 71 M.P.H.
 MAX. TRACTIVE EFFORT W/1/2 VARIABLE SUPPLIES 62,240 LBS.
 AT 25% ADHESION 21°
 MAX. CURVATURE DEGREE 21°
 MAX. OVERALL DIMENSIONS:
 HEIGHT 15'-11"
 WIDTH 10'-4"
 TRAIN LENGTH 56'-2"
 2500 H.P. MODEL GP 30 ROAD LOCOMOTIVE
 EQUIPPED W/DYNAMIC BRAKES

GENERAL MOTORS CORP. E.M.D.
 MAR. 1963
 APRIL 1963
 G.M.C. - E.M.D.
 40"
 HYATT-6 1/2 X 12
 900 R.P.M.
 315 R.P.M.
 16"
 9 1/8"
 10"
 WT. IN WORKING ORDER W/ALL SUPPLIES 259,290 LBS.
 WT. ON DRIVERS 259,290 LBS.
 AIRBRAKE SCHEDULE 26 L
 BRAKE CYLINDERS 9 X 8"
 AIR COMPRESSOR
 GARDNER-DENVER
 MODEL WBG-8008

NOTE:
 LOCO. NO. 2000 UPGRADED IN 1974
 MODEL 16-645ED3A ENGINE INSTALLED
 RENUMBERED 2504 BC. 2-6-64

ALASKA RR CK'D 3-83 RCK

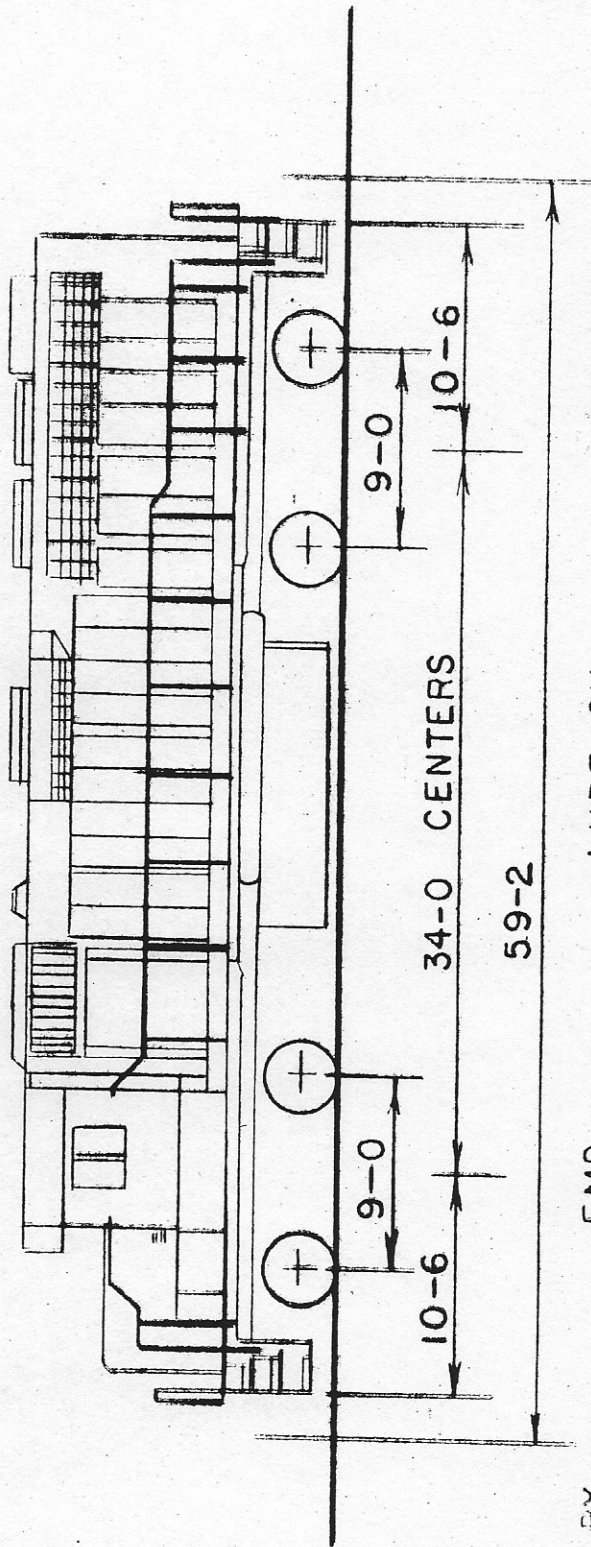


BUILT BY GENERAL MOTORS CORP. E.M.D.
DATE BUILT 1983
PLACED IN SERVICE 1983
PURCHASED FROM G.M.C.-E.M.D.
WHEEL DIA. 40"
JOURNALS HYATT - 6 1/2" X 12"
ENGINE 12-645-F38
MAX GOVERNED SPEED 954 R.P.M.
MAX IDLING SPEED LOW: 200 R.P.M. HIGH: 315 R.P.M.
CYLINDERS 12
BORE 9 1/16"
STROKE 10"
WT. IN WORKING ORDER W/WALL SUPPLIES 267,000 LBS.
WT. ON DRIVERS 267,000 LBS.
AIRBRAKE SCHEDULE 26 L.
BRAKE CYLINDERS 9 X 8"
AIR COMPRESSOR GARDNER - DENVER
MODEL WBO

GEAR RATIO: 70:17
SUPPLIES TOTAL CAPY. 304 GAL.
LUBRICATING OIL 2,500 GAL.
FUEL OIL 276 GAL.
ENG. COOLING WATER 40 CU. FT.
SAND 66,750 LBS.
MAX. TRACTIVE EFFORT W/VARIABLE SUPPLIES AT 25% ADHESION 70 M.P.H.
MAX. SAFE SPEED 19
MAX. CURVATURE DEGREE 15'-6"
MAX. OVERALL DIMENSIONS: 10'-4"
HEIGHT 59'-2"
WIDTH 15'-6"
TRAIN LENGTH 2800 H.P. MODEL GP 49 ROAD LOCOMOTIVE
EQUIPPED W/DYNAMIC BRAKES

ALASKA RR

LOCOS 3001-3015



BUILT BY	EMD	LUBE OIL	243 GAL
DATES BUILT	1975-1978	FUEL	2600 GAL
PURCHASED FROM	EMD	COOLING WATER	275 GAL
PLACED IN SERVICE	1975-1978	SAND	56 CU FT
WHEELS	40"		
JOURNALS	6 1/2" x 12"		
MAX RPM	900	MAX WIDTH	10'-3"
IDLING RPM	315	MAX HEIGHT	15'-4"
CYLINDERS	16		
BORE	9 1/16"		
STROKE	10"	ENGINE	645E3
WT. ON DRIVERS	265,600	HORSEPOWER	3000
AIR BRAKES	26 BL		
AIR COMPRESSOR	WBO 8III		
GEAR RATIO	62:15		
MAX SPEED	65 MPH		
MAX CURVE	24°		

CK'D 3-83 RCK

ALASKA RR